

KG Teacher Created

This comprehensive font family was made in collaboration with my KG Fonts TikTok family. Hundreds of teachers gave input on what was needed to make this family what teachers truly need.

Each font in the family includes several alternate styles of letters. You can access them via the included Word document titled KGTeacherCreatedEXTRAS. Simply copy and paste the needed letters into your document and change it to the font version you're using.

A B C D E F G H I J J K L M M M N O P Q R S T U U V

W W X Y Y Y Z Z a a a b b c d d e e f g g h i j k k l m n o p p p q

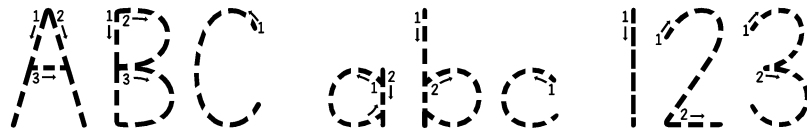
q q q r s s t t t t u v w x y y z z

0 1 1 2 2 3 4 4 4 5 6 7 8 8 9 ä å ē ē ə ĭ ī ö ö ū ū

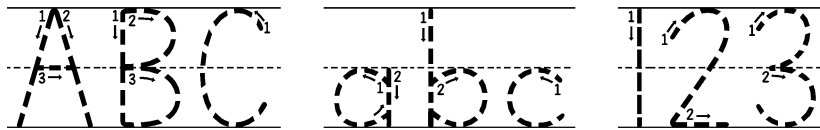
The font family also includes multilingual support for most European languages.

ABC abc 123

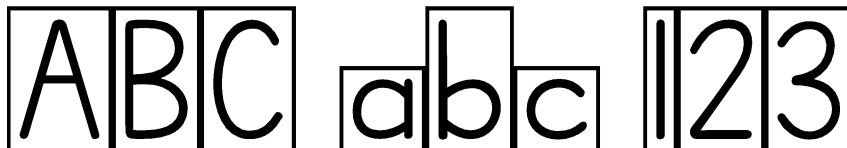
KG Teacher Created



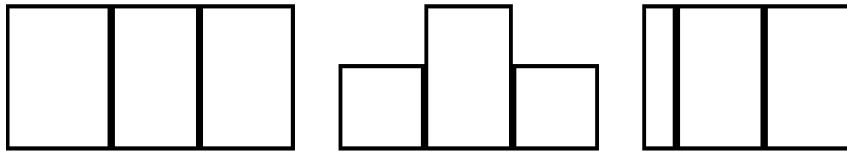
KG Teacher Created Arrows (extra versions of O, o, 0, 5 included in ~ ^ \ and _)



KG Teacher Created Arrows Lined (extra versions of O, o, 0, 5 included in ~ ^ | and _, use backslash for continuous lined spaces _____)



KG Teacher Created Boxed (with letters inside)



KG Teacher Created Boxes (empty boxes- use capital
EMW for spelling test boxes for 1, 2, 3 letter segments)

ABC abc 123

KG Teacher Created Bubble Dot (perfect for q-tip
painting!)

ABC abc 123

KG Teacher Created Chunky

ABC abc 123

KG Teacher Created Dashed

ABC abc 123

KG Teacher Created Dash Lined (use backslash for continuous lined spaces!)

ABC abc 123

☁️
✈️
🌿
🪴

KG Teacher Created Dot 4Lined (4 lines for Foundations users, use the backslash for lined spaces, use the vertical bar key for sky, plane, grass, worm icons.)

ABC abc 123

KG Teacher Created Dot Lined (use backslash for continuous lined spaces)

ABC abc 123

KG Teacher Created Dotted

ABC abc 123

KG Teacher Created Lined (solid center line- use
backslash for continuous lined spaces)

ABC abc 123

KG Teacher Created Lines (dashed center line- use
backslash for lined spaces!)

ABC abc 123

KG Teacher Created Outline (thin outline)

ABC abc 123

KG Teacher Created Outline 2 (thicker outline)

ABC abc 123

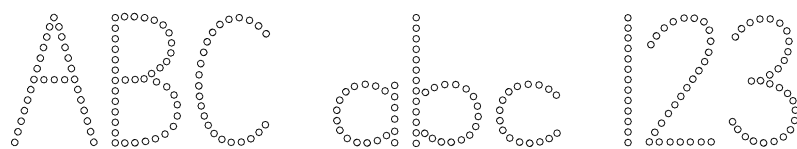
KG Teacher Created Outline 3 (starting dot included,
extra versions of O, o, 0, 5 included in ~ ^ | and _)

ABC abc 123

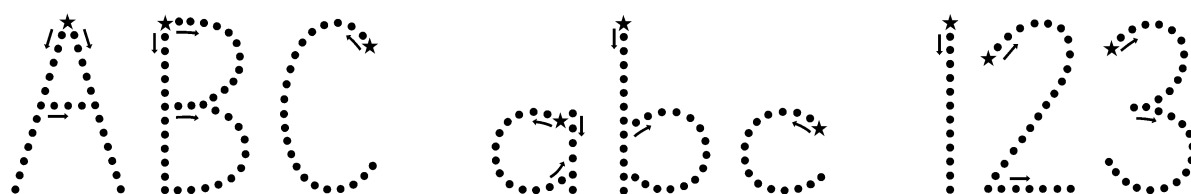
KG Teacher Created Outlined (outlines on lines)

ABC abc 123

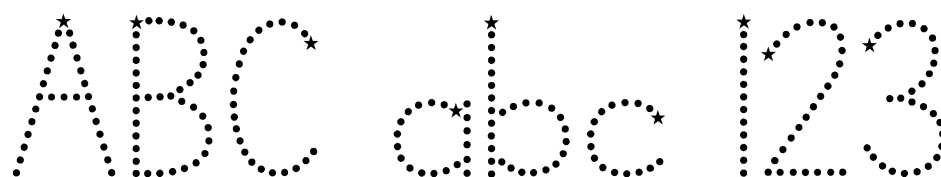
KG Teacher Created Outline Dot (thin outline with dots
inside- perfect for q-tip painting)



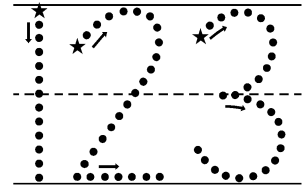
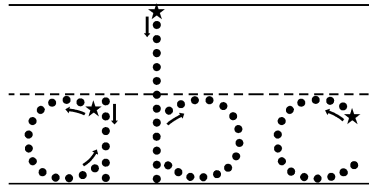
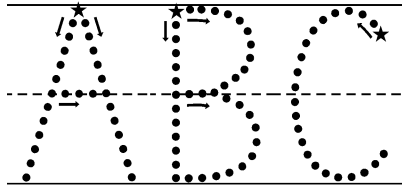
KG Teacher Created Polkadot (thinly outlined dots perfect for q-tip painting with no outline around the letters)



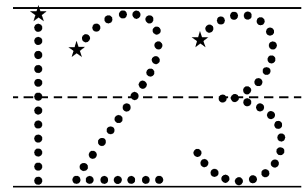
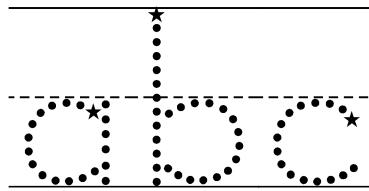
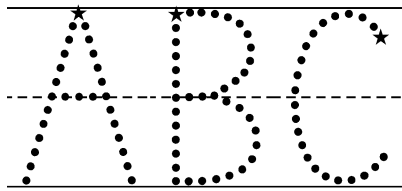
KG Teacher Created Star Arrows (a dotted font with a star indicating the start of the letters and arrows indicating letter formation directions, extra versions of O, o, 0, 5 included in ~ ^ | and _)



KG Teacher Created Star Dotted (star to indicate start of letter, extra "2:00 start" versions of O, o, 0, 5 included in ~ ^ | and _)



KG Teacher Created Star Lined (star to indicate start of letter on lines and arrows, extra "2:00 start" versions of O, o, 0, 5 included in ~ ^ | and _, use the backslash for continuous lined spaces)



KG Teacher Created Star Lined2 (star to indicate start of letter on lines, extra "2:00 start" versions of O, o, 0, 5 included in ~ ^ | and _, use the backslash for continuous lined spaces)

ABC abc 123

KG Teacher Created Thin

ABC abc 123 .

KG Teacher Created Thin Lined (use backslash for lined spaces! Use ~ and ^ for lines with starting dots on the midline and top line)

ABC abc 123 .

KG Teacher Created Thin 2Lined (for HWOT users, only 2 handwriting lines, both solid. Use backslash for lined spaces! Use ~ and ^ for lines with starting dots on the midline and top line)

ABC abc 123

KG Teacher Created Thinner

Thank you so much! Love love love, KG